

WASF2 Antibody
Rabbit mAb
Catalog # AP90697**Specification**

WASF2 Antibody - Product Information

Application	WB, IHC
Primary Accession	O9Y6W5
Clonality	Monoclonal
Other Names	
Wiskott-Aldrich syndrome protein family member 2WASP family protein member 2; Protein WAVE-2; Verprolin homology domain-containing protein 2; WASF2;	
Isotype	Rabbit IgG
Host	Rabbit
Calculated MW	54284 Da

WASF2 Antibody - Additional Information

Dilution	WB~~1:1000 IHC~~1:100~500
Purification	Affinity-chromatography
Immunogen	A synthesized peptide derived from human WASF2
Description	Wiskott-Aldrich syndrome proteins (WASPs) mediate actin dynamics by activating the Arp2/3 actin nucleation complex in response to activated Rho family GTPases. In mammals, five WASP family members have been described. Hematopoietic WASP and ubiquitously expressed N-WASP are autoinhibited in unstimulated cells.
Storage Condition and Buffer	Rabbit IgG in phosphate buffered saline , pH 7.4, 150mM NaCl, 0.02% sodium azide and 50% glycerol. Store at +4°C short term. Store at -20°C long term. Avoid freeze / thaw cycle.

WASF2 Antibody - Protein Information**Name** WASF2 ([HGNC:12733](#))**Function**

Downstream effector molecule involved in the transmission of signals from tyrosine kinase receptors and small GTPases to the actin cytoskeleton. Promotes formation of actin filaments. Part of the WAVE complex that regulates lamellipodia formation. The WAVE complex regulates actin filament reorganization via its interaction with the Arp2/3 complex.

Cellular Location

Cytoplasm, cytoskeleton. Cell projection, lamellipodium. Basolateral cell membrane. Note=At the interface between the lamellipodial actin meshwork and the membrane.

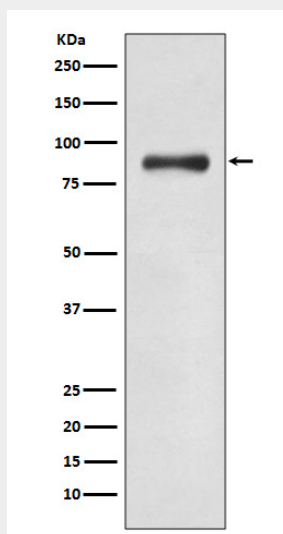
Tissue Location

Expressed in all tissues with strongest expression in placenta, lung, and peripheral blood leukocytes, but not in skeletal muscle.

WASF2 Antibody - Protocols

Provided below are standard protocols that you may find useful for product applications.

- [Western Blot](#)
- [Blocking Peptides](#)
- [Dot Blot](#)
- [Immunohistochemistry](#)
- [Immunofluorescence](#)
- [Immunoprecipitation](#)
- [Flow Cytometry](#)
- [Cell Culture](#)

WASF2 Antibody - Images

Western blot analysis of WASF2 expression in K562 cell lysate.